

# HER301 - HER308

PRV : 50 - 1000 Volts

Io : 3.0 Amperes

## FEATURES :

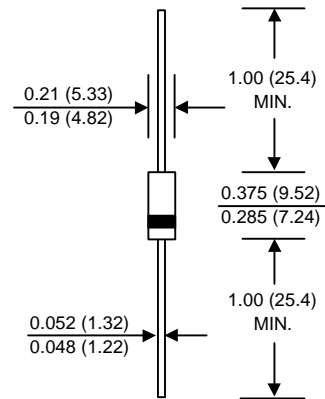
- \* High current capability
- \* High surge current capability
- \* High reliability
- \* Low reverse current
- \* Low forward voltage drop
- \* Fast switching for high efficiency

## MECHANICAL DATA :

- \* Case : DO-201AD Molded plastic
- \* Epoxy : UL94V-O rate flame retardant
- \* Lead : Axial lead solderable per MIL-STD-202, Method 208 guaranteed
- \* Polarity : Color band denotes cathode end
- \* Mounting position : Any
- \* Weight : 1.16 grams

# HIGH EFFICIENT RECTIFIER DIODES

## DO-201AD



Dimensions in inches and ( millimeters )

## MAXIMUM RATINGS AND ELECTRICAL CHARACTERISTICS

Rating at 25 °C ambient temperature unless otherwise specified.  
Single phase, half wave, 60 Hz, resistive or inductive load.  
For capacitive load, derate current by 20%.

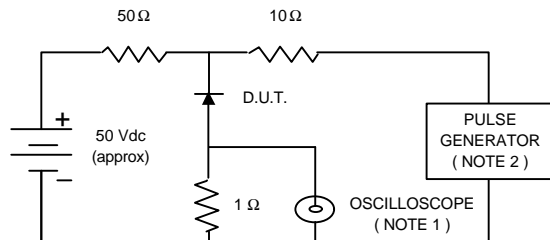
RATING	SYMBOL	HER 301	HER 302	HER 303	HER 304	HER 305	HER 306	HER 307	HER 308	UNIT	
Maximum Recurrent Peak Reverse Voltage	V <sub>RRM</sub>	50	100	200	300	400	600	800	1000	V	
Maximum RMS Voltage	V <sub>RMS</sub>	35	70	140	210	280	420	560	700	V	
Maximum DC Blocking Voltage	V <sub>DC</sub>	50	100	200	300	400	600	800	1000	V	
Maximum Average Forward Current 0.375"(9.5mm) Lead Length      Ta = 55 °C	I <sub>F(AV)</sub>	3.0								A	
Maximum Peak Forward Surge Current, 8.3ms Single half sine wave superimposed on rated load (JEDEC Method)	I <sub>FSM</sub>	150								A	
Maximum Forward Voltage at I <sub>F</sub> = 3.0 A	V <sub>F</sub>	1.1					1.7				V
Maximum DC Reverse Current      Ta = 25 °C at Rated DC Blocking Voltage      Ta = 100 °C	I <sub>R</sub>	10								μA	
	I <sub>R(H)</sub>	50								μA	
Maximum Reverse Recovery Time ( Note 1 )	T <sub>rr</sub>	50					75				ns
Typical Junction Capacitance ( Note 2 )	C <sub>J</sub>	50								pf	
Junction Temperature Range	T <sub>J</sub>	- 65 to + 150								°C	
Storage Temperature Range	T <sub>STG</sub>	- 65 to + 150								°C	

## Notes :

- ( 1 ) Reverse Recovery Test Conditions : I<sub>F</sub> = 0.5 A, I<sub>R</sub> = 1.0 A, I<sub>rr</sub> = 0.25 A.
- ( 2 ) Measured at 1.0 MHz and applied reverse voltage of 4.0 Vdc

## RATING AND CHARACTERISTIC CURVES ( HER301 - HER308 )

FIG.1 - REVERSE RECOVERY TIME CHARACTERISTIC AND TEST CIRCUIT DIAGRAM



- NOTES : 1. Rise Time = 7 ns max., Input Impedance = 1 megaohm, 22 pF.  
 2. Rise time = 10 ns max., Source Impedance = 50 ohms.  
 3. All Resistors = Non-inductive Types.

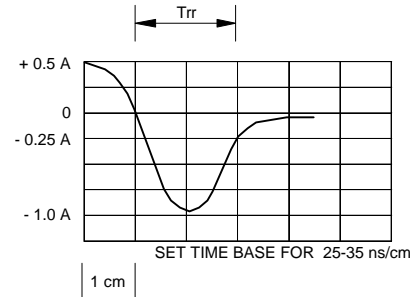


FIG.2 - DERATING CURVE FOR OUTPUT RECTIFIED CURRENT

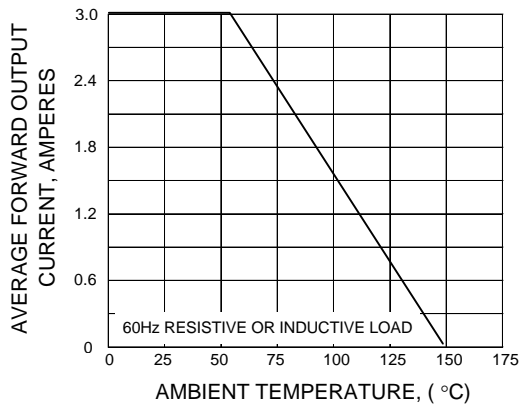


FIG.3 - MAXIMUM NON-REPETITIVE PEAK FORWARD SURGE CURRENT

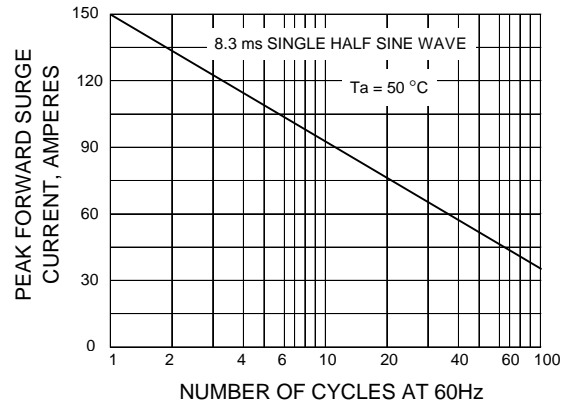


FIG.4 - TYPICAL FORWARD CHARACTERISTICS

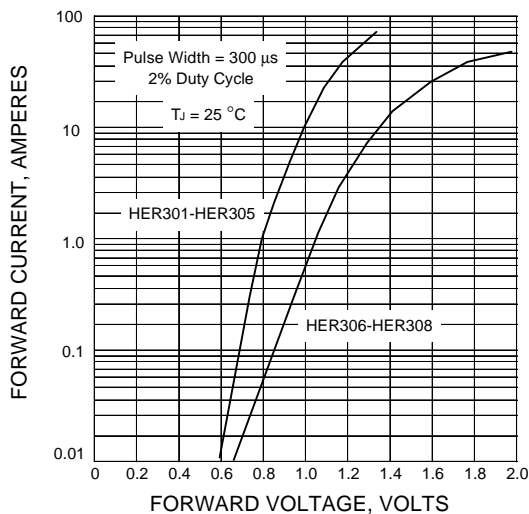


FIG.5 - TYPICAL REVERSE CHARACTERISTICS

